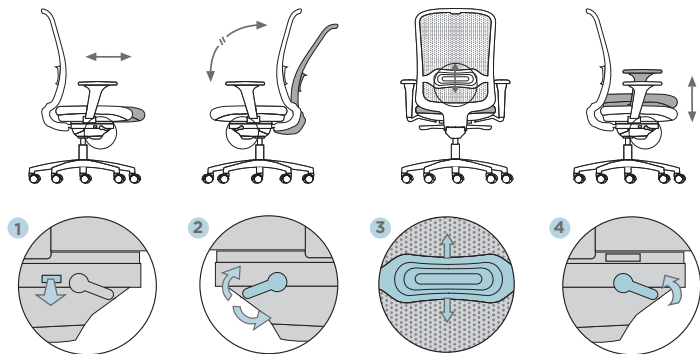




LINK WORK CHAIR



FEATURES



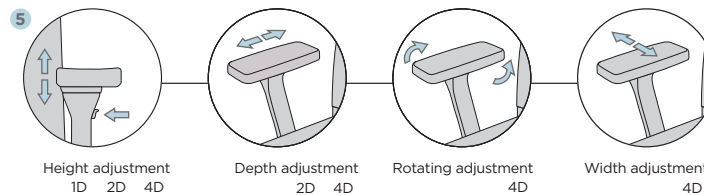
2 types of backrest NE or BA



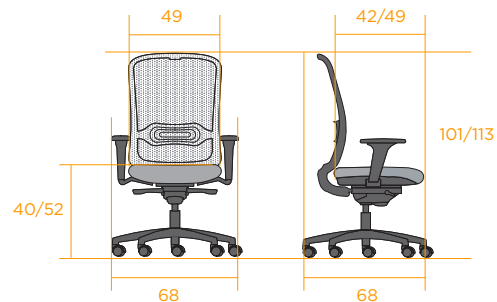
OPTIONS

Armrest

- Height adjustment 75 mm, 7 positions (4D: 100 mm, 9 positions)
- Depth adjustment: (2D: 55 mm)
- Rotating adjustment 4D: 20° (-10°, 0°, +10°)
- Width adjustment 25 mm.



DIMENSIONS



kg	Weight in Kg.	13,87
Ta	Seat fabric	0,64 ml (2 uds.)
Tr	Backrest fabric	0,60 ml (2 uds.)



LINK WORK CHAIR

TECHNICAL SHEETS



DESCRIPTION

BACKREST

Lumbar support height adjustable 105 mm. Reclining angle up to 21°.

Mesh backrest: Perimeter frame, made of highly resistant and flexible polyamide, fixed directly to the support-backrest. The tension of the mesh allows a correct support and adaptation of the backrest to the anatomy of the user's back. It does not deform. fabric feel.

SEAT

Adjustable in depth 70 mm with 8 positions.

Injection polypropylene support with ergonomically shaped fiber, plus flexible foam rubber with a thickness of 45 mm and a density of 40 kg/m³, onto which the fabric is fitted.

MECHANISM

Self-weighting synchro mechanism. Angular relationship 21° Resp./ 11° seat.

It can be locked in 5 position or permanent contact with non-return system.

BASE

Polyamide with fiber: Ø680 mm, black finish.

Aluminum: Ø700 mm, polished or painted epoxy polyester.

Soft and hard floor castors ø 60, black color.

Option conductive castor ø 60.



ARMRESTS



▲ ARMREST 1D, NE or BA

▲ ARMREST 2D, NE or BA

▲ ARMREST 4D, NE



RECYCLABILITY RATE



CERTIFICATIONS AND STANDARDS



UNE EN 1335