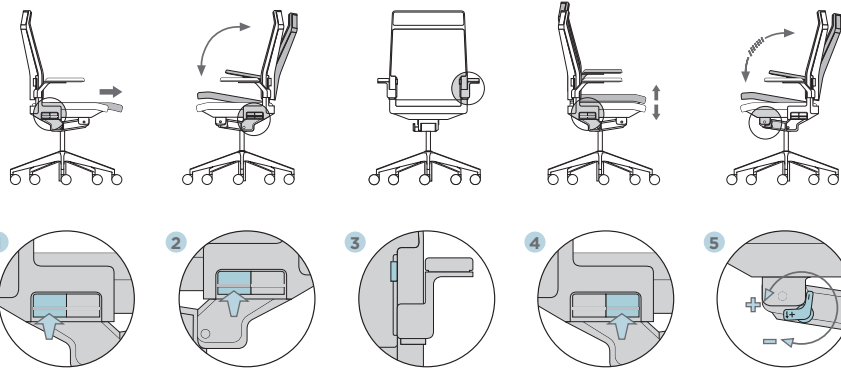




DIS WORK CHAIR

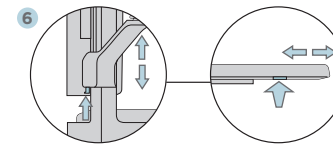
FEATURES



OPTIONS

Armrest

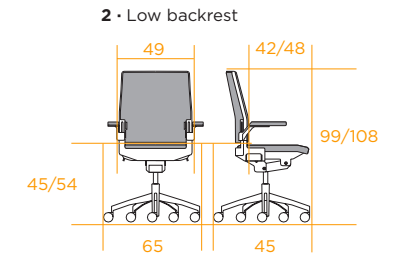
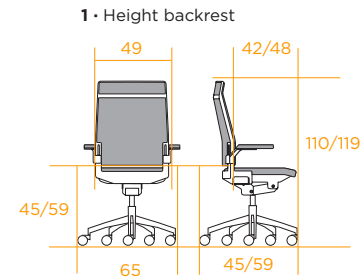
- Height adjustment: (80 mm, 8 positions)
- Depth adjustment: (56 mm, 7 positions)



Height adjustment

Depth adjustment

DIMENSIONS



		· 1 ·	· 2 ·
kg	Weight in Kg.	21,8	21,2
Ta	Seat fabric	0,52	0,52
Tr	Backrest fabric	0,80	0,63
Pa	Seat leather	0,70	0,70
Pr	Backrest leather	1,22	1,13



DIS WORK CHAIR

TECHNICAL SHEETS



DESCRIPTION

BACKREST

Large reclining angle of up to 30°.

Lumbar support height adjustable 80 mm with multiple positions.

Injected anodized aluminium L-2520 structure.

Mesh backrest: the tension of the mesh allows a correct support of the user's back. It does not deform.

Upholstered backrest: the front of the back is of a high density (35-40 Kg/m³) polyurethane foam cushion , anatomically injected. The rear of the back can be optionally of injected polypropylene upholstered or visible.

SEAT

Seat depth in 60 mm with 6 positions.

Seat support of injected polypropylene with a high density (40-45 kg/m³) polyurethane foam cushion, anatomically injected.

MECHANISM

Synchronized mechanism, spring system.

It can be locked in 5 position or permanent contact with non-return system. Pressure set by a lever to customise the pressure of the backrest in 3 positions.

BASE

5 star aluminum base Ø720 mm, polished or painted epoxy polyester.

Soft and hard floor castors ø 60, black color.

Option conductive castor ø 60.



ARMRESTS

Arms with aluminum structure and polyurethane support that may also be upholstered in leather, with soft touch.



▲ ARMREST DIS



RECYCLABILITY RATE



CERTIFICATIONS AND STANDARDS



tecnaliacertified
 PRODUCTOS CERTIFICADOS DE MOBILIARIO
RT.01 MOBILIARIO - MDFS4
 UNE-EN 1335